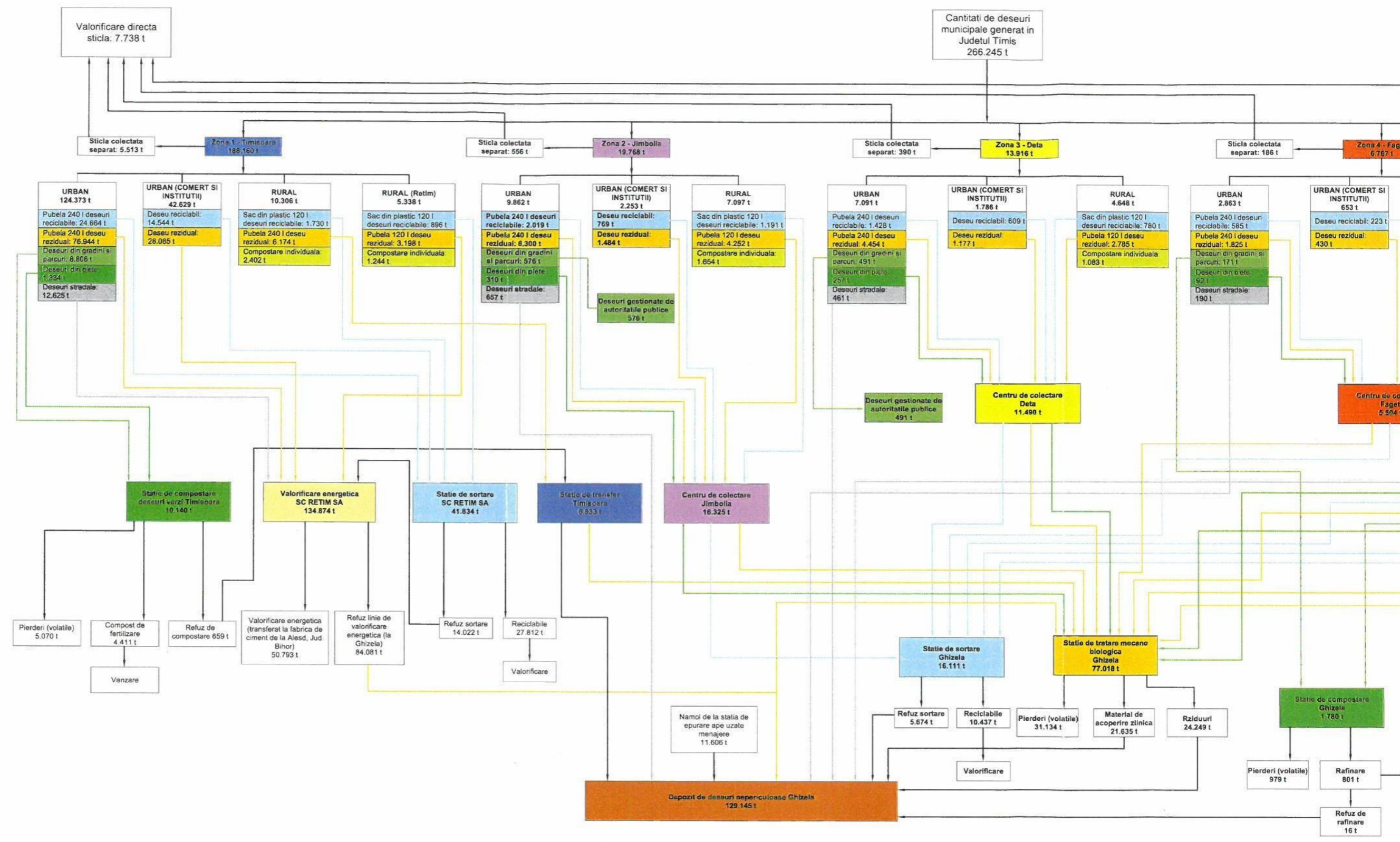


ANEXA 3.

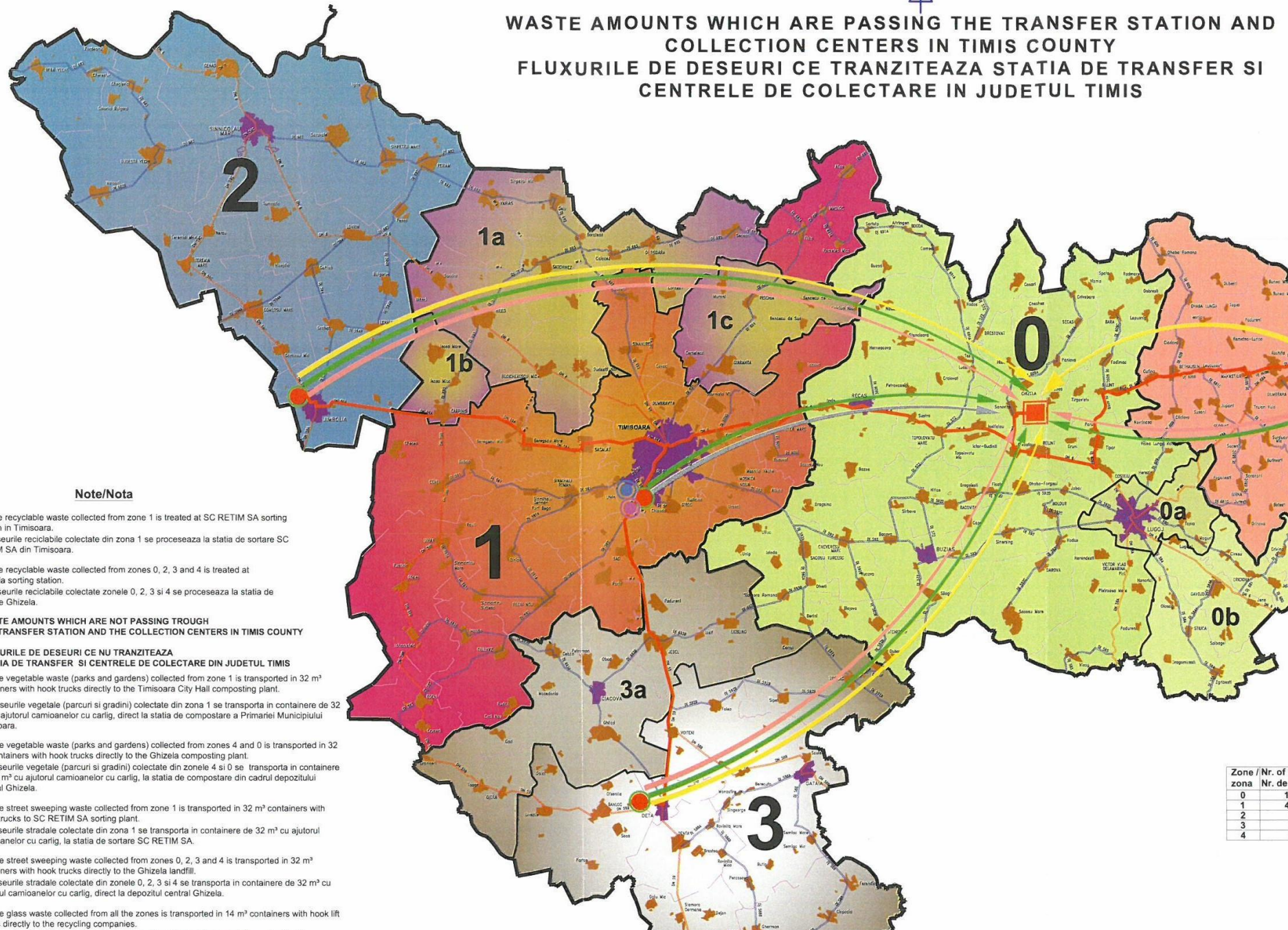
**SCHEMELE FLUXURILOR DE DESEURI PE ZONELE DE
COLECTARE ALE JUDETULUI TIMIS**

FLUXUL DESEURILOR IN JUDETUL TIMIS IN ANUL

A
B
C
D
E
F



WASTE AMOUNTS WHICH ARE PASSING THE TRANSFER STATION AND COLLECTION CENTERS IN TIMIS COUNTY
 FLUXURILE DE DESEURI CE TRANZITEAZA STATIA DE TRANSFER SI CENTRELE DE COLECTARE IN JUDETUL TIMIS



Note/Nota

1. The recyclable waste collected from zone 1 is treated at SC RETIM SA sorting station in Timisoara.
1. Deseurile reciclabile colectate din zona 1 se proceseaza la statia de sortare SC RETIM SA din Timisoara.
2. The recyclable waste collected from zones 0, 2, 3 and 4 is treated at Ghizela sorting station.
2. Deseurile reciclabile colectate zonele 0, 2, 3 si 4 se proceseaza la statia de sortare Ghizela.

WASTE AMOUNTS WHICH ARE NOT PASSING THROUGH THE TRANSFER STATION AND THE COLLECTION CENTERS IN TIMIS COUNTY

FLUXURILE DE DESEURI CE NU TRANZITEAZA STATIA DE TRANSFER SI CENTRELE DE COLECTARE DIN JUDETUL TIMIS

3. The vegetable waste (parks and gardens) collected from zone 1 is transported in 32 m³ containers with hook trucks directly to the Timisoara City Hall composting plant.
3. Deseurile vegetale (parcuri si gradini) colectate din zona 1 se transporta in containere de 32 m³ cu ajutorul camioanelor cu carlig, direct la statia de compostare a Primariei Municipiului Timisoara.
4. The vegetable waste (parks and gardens) collected from zones 4 and 0 is transported in 32 m³ containers with hook trucks directly to the Ghizela composting plant.
4. Deseurile vegetale (parcuri si gradini) colectate din zonele 4 si 0 se transporta in containere de 32 m³ cu ajutorul camioanelor cu carlig, la statia de compostare din cadrul depozitului central Ghizela.
5. The street sweeping waste collected from zone 1 is transported in 32 m³ containers with hook trucks to SC RETIM SA sorting plant.
5. Deseurile stradale colectate din zona 1 se transporta in containere de 32 m³ cu ajutorul camioanelor cu carlig, la statia de sortare SC RETIM SA.
6. The street sweeping waste collected from zones 0, 2, 3 and 4 is transported in 32 m³ containers with hook trucks directly to the Ghizela landfill.
6. Deseurile stradale colectate din zonele 0, 2, 3 si 4 se transporta in containere de 32 m³ cu ajutorul camioanelor cu carlig, direct la depozitul central Ghizela.
7. The glass waste collected from all the zones is transported in 14 m³ containers with hook lift trucks directly to the recycling companies.

Zone / Nr. de zona	Nr. de
0	1
1	4
2	
3	
4	

